

Slab Type Apartments

Only 2 apartments per floor with north & south oriented balconies, ensures ample sunlight and proper ventilation in all the corners of the house. This also provides enhanced privacy and exclusivity giving your house a new definition of luxury.

Beautiful Views

The living rooms are as wide as 7.5 meters with attached balconies to enhance the joy of green views. Enjoy unlimited greens from all the corners of the house, including all your bedrooms, living/dining rooms and kitchens.

Extravagant Balconies

Enjoy these spacious balconies with all bedrooms, kitchen and not to miss even with the toilets. So plant your own kitchen garden or just sit and relax, just soak yourself in these green horizons anytime anywhere.

High Ceilings

To enhance the sense of space and openness, the floor height is 3.6 meters. The higher the ceiling, the better the ventilation of air.

Master Bedroom Dressing Area

6.01 sqm of classy his & her master closet area is lined with open shelving & display cabinets.

Private Elevators

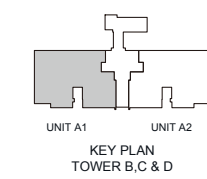
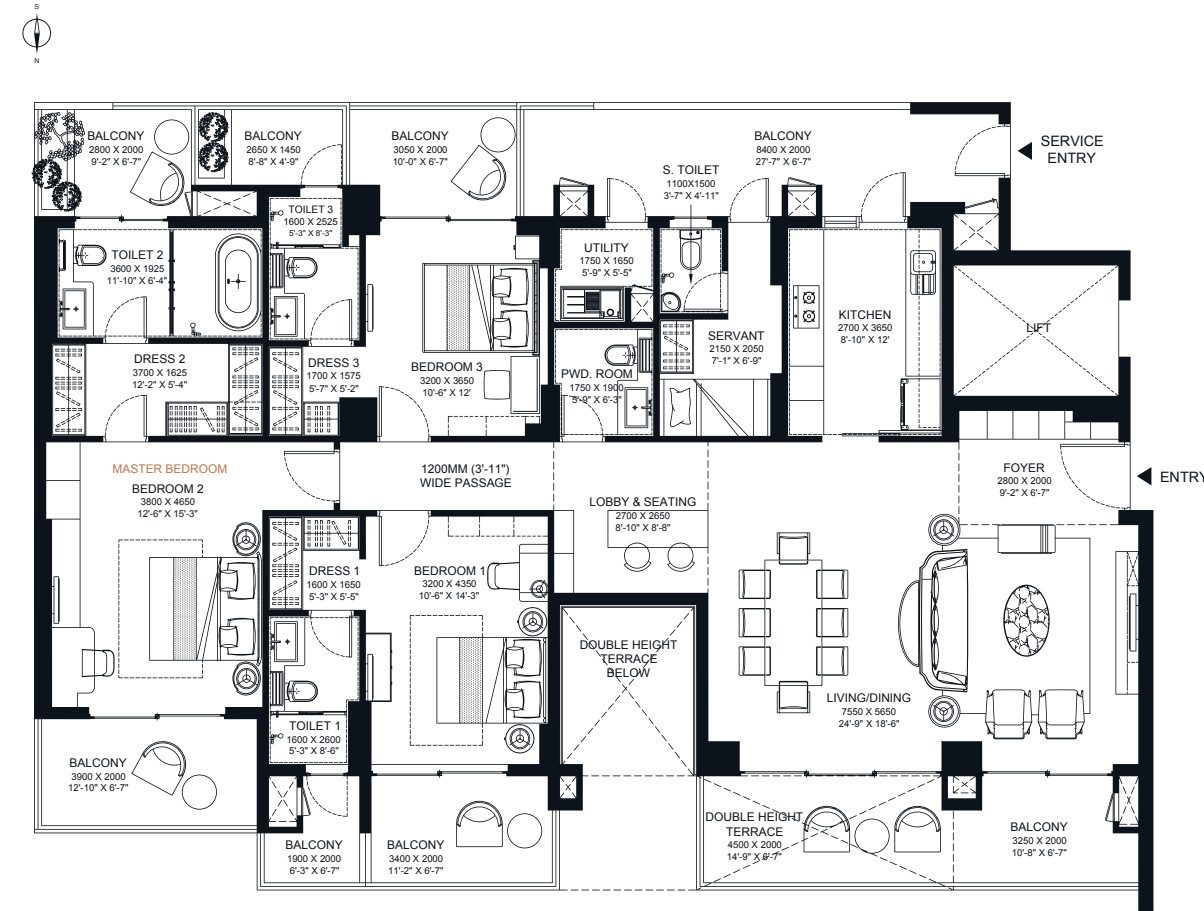
Two passenger elevators and one service elevator takes care of your privacy.

Dedicated Service Entry

To ensure safety and privacy of yours and your loved ones, a separate and limited access is provided for the service staff.

3 BHK TYPE A

Carpet Area: 151.94 sqm/ 1635.48 sqft
Balcony/ Terrace Area: 62.92 sqm/ 677.27 sqft
Super Area: 305.08 sqm/ 3283.93 sqft

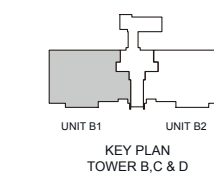
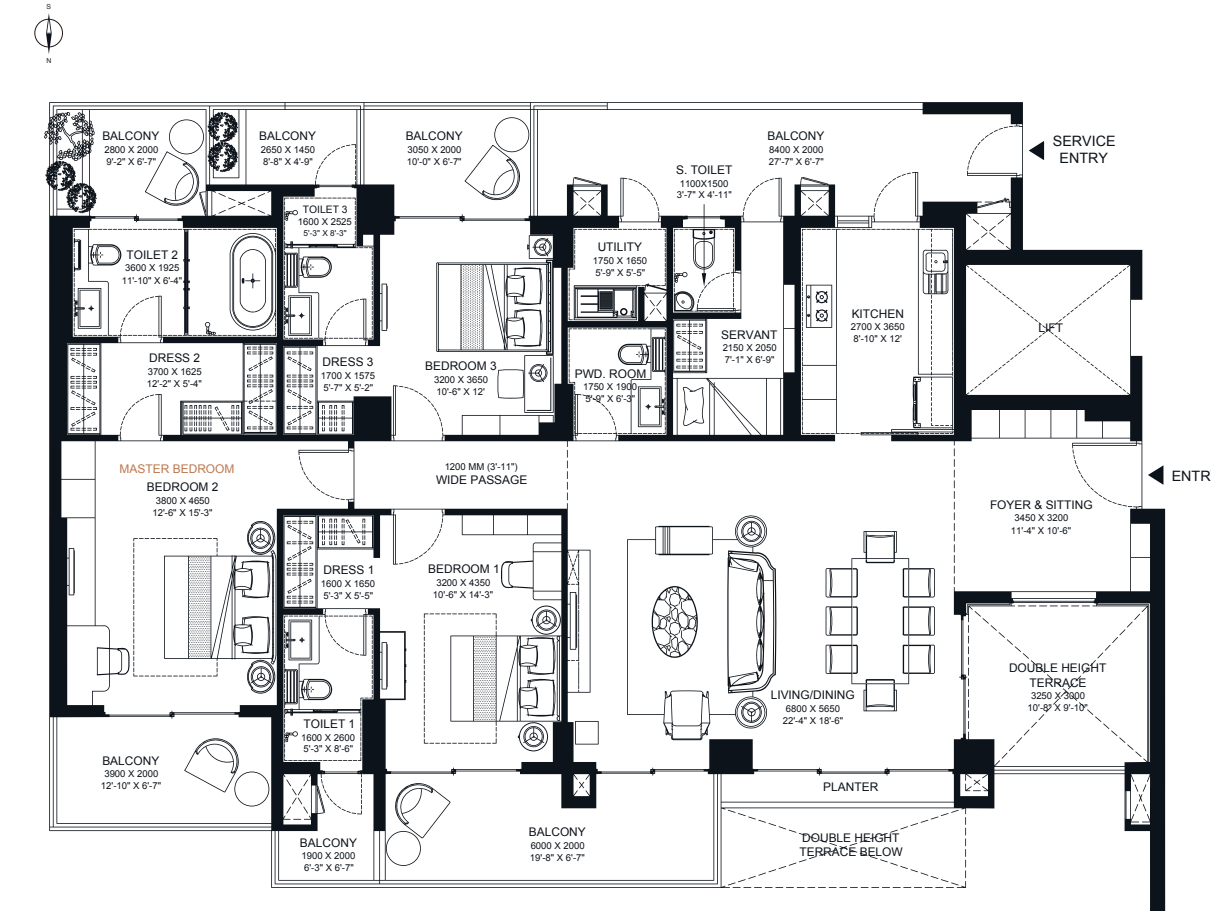


ADVANTAGES

- 1) Living & dining area as long as 7.55 meter
- 2) 9 sqm of double height terrace with living & dining area
- 3) Balconies/ terrace spread over 62.92 sqm area
- 4) Dedicated space of 7.16 sqm for Living & dining bar

3 BHK TYPE B

Carpet Area: 150.05 sqm/ 1615.14 sqft
Balcony/ Terrace Area: 62.61 sqm/ 673.93 sqft
Super Area: 302.40 sqm/ 3255.07 sqft

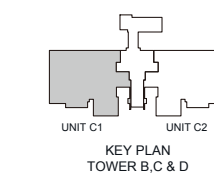
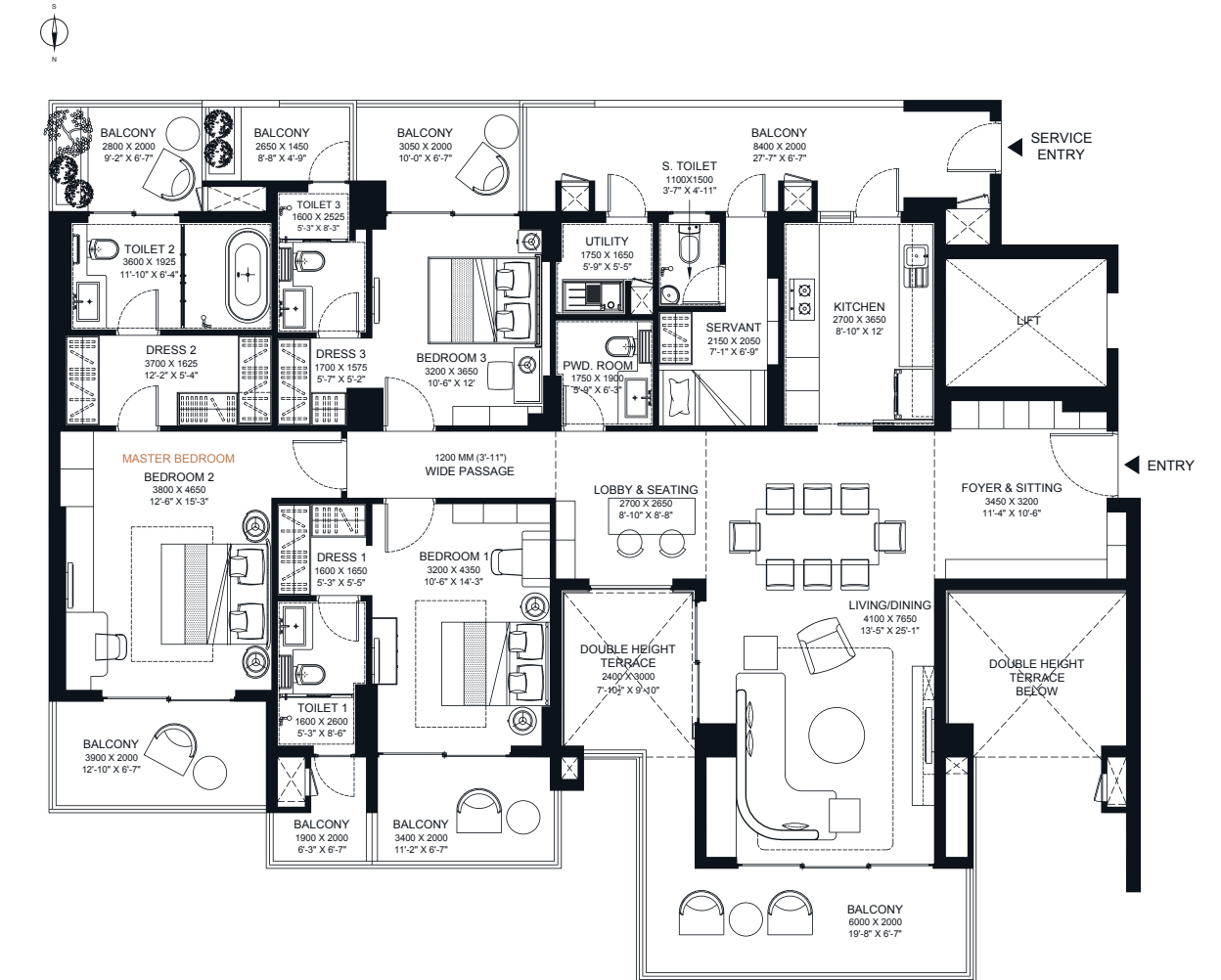


ADVANTAGES

- 1) A dedicated foyer of 11.04 sqm
- 2) Unlimited green views from 6.8-meter-wide Living & dining area
- 3) 9.36 sqm of double height terrace attached with Dining area
- 4) Enjoy large balconies/terraces spread over 62.61 sqm area

3 BHK TYPE C

Carpet Area: 149.96 sqm/ 1614.17 sqft
Balcony/ Terrace Area: 69.41 sqm/ 747.13 sqft
Super Area: 312.14 sqm/ 3359.90 sqft



ADVANTAGES

- 1) A dedicated foyer of 11.04 sqm
- 2) Enjoy expansive views from the wrap around balcony
- 3) Create your own vertical garden in 7.2 sqm of double height terrace
- 4) Enjoy large balconies/terraces spread over 69.41 sqm area

Slab Type Apartments

Only 2 apartments per floor with North & South oriented balconies, ensures ample sunlight and proper ventilation in all the corners of the house. This also provides enhanced privacy and exclusivity giving your house a new definition of luxury.

Beautiful Views

The living rooms are as wide as 8.9 meters with attached balconies to provide you the enhanced feeling of green views. The views can be enjoyed from all the corners of the house, including all your bedrooms, living/dining & kitchen.

Extravagant Balconies

Enjoy these spacious balconies with all bedrooms, kitchen and not to miss even with the master toilets. So plant your own kitchen garden or just sit and relax, just soak yourself in these green horizons anytime anywhere.

High Ceilings

The floor height at 3.6 meters enhances sense of spaciousness which allows adequate height for chandeliers and enjoy the grand experience.

Master Bedroom Dressing Area

8.4 sqm of classy his & her Master Closet area is lined with open shelving & display cabinets.

Private Elevators

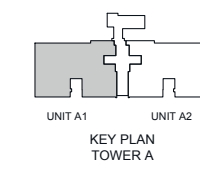
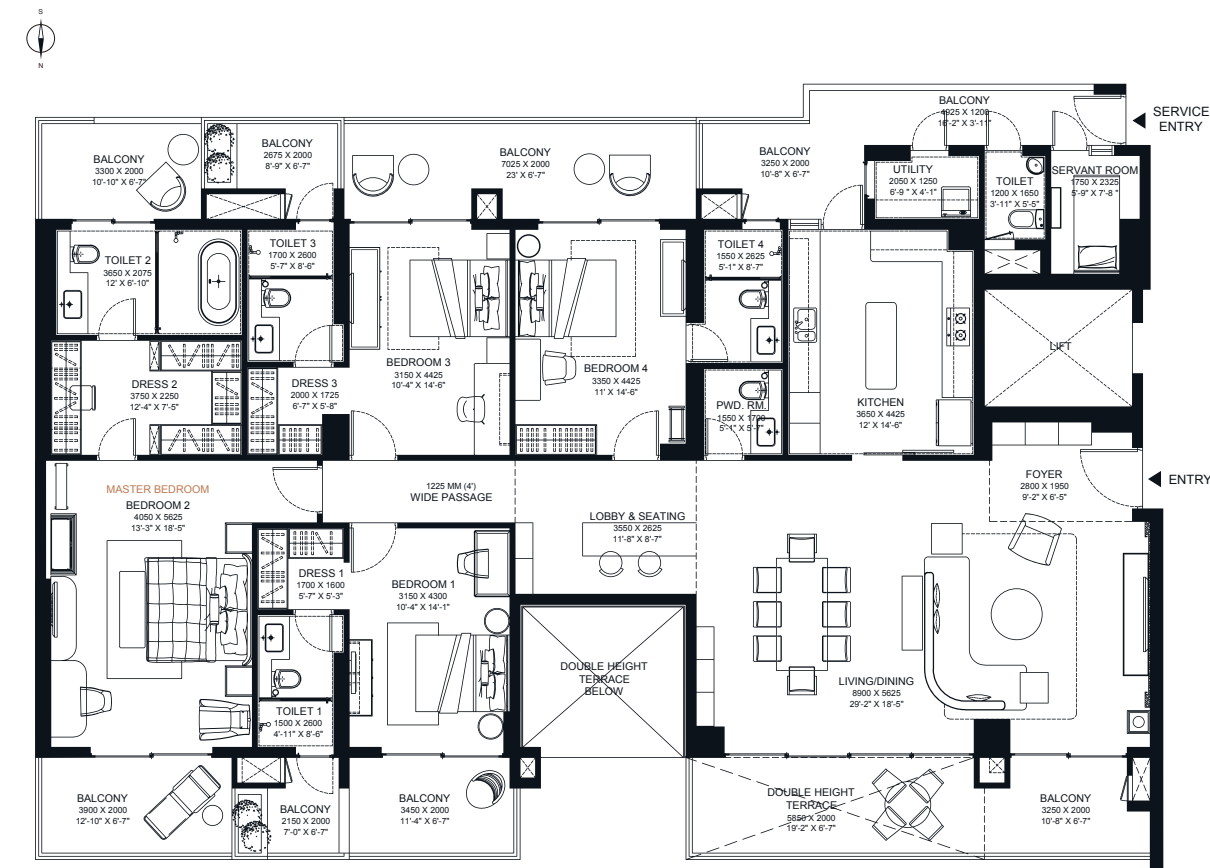
Two passenger elevators and one service elevator takes care of your privacy.

Dedicated Service Entry

To ensure safety and privacy of yours and your loved ones, a separate and limited access is provided for the service staff.

4 BHK TYPE A

Carpet Area: 198.37 sqm/ 2135.25 sqft
Balcony/ Terrace Area: 72.77 sqm/ 783.30 sqft
Super Area: 362.97 sqm/ 3907.03 sqft

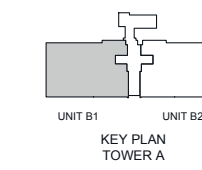
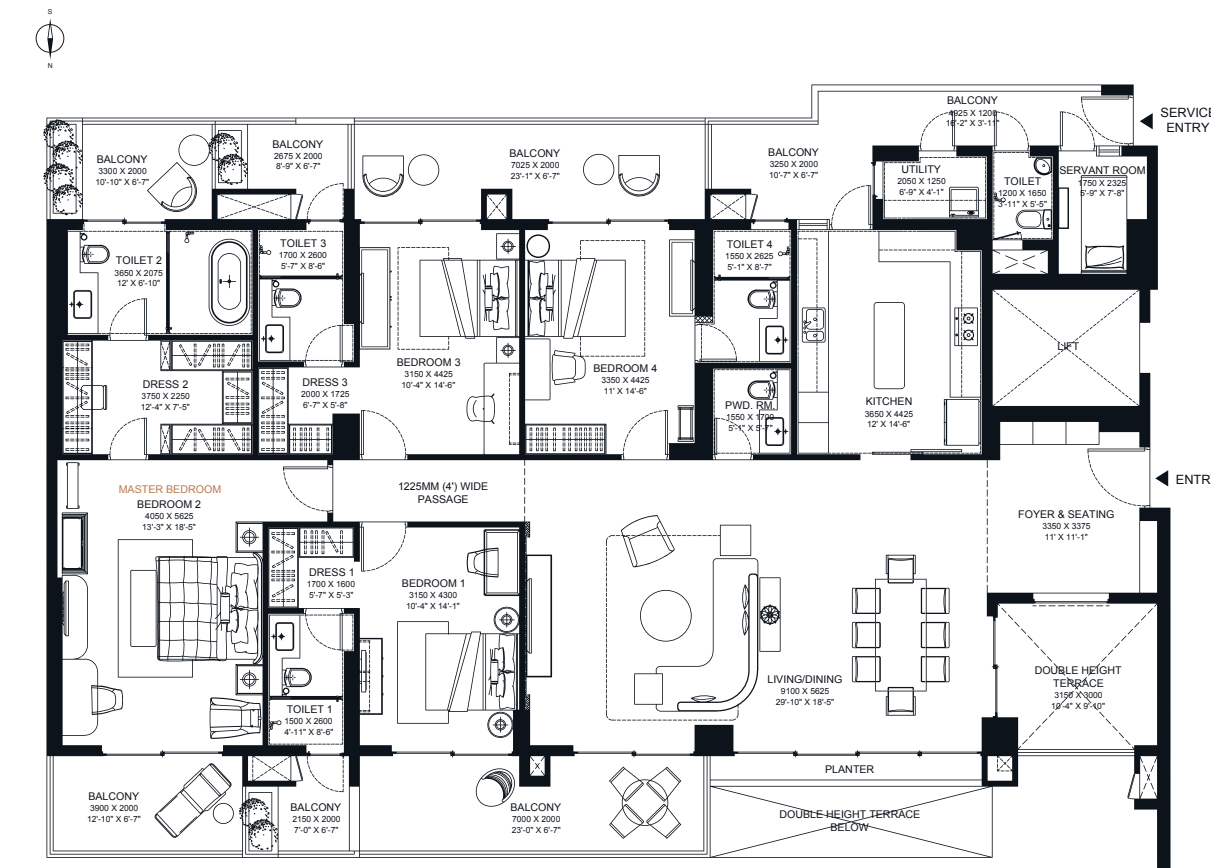


ADVANTAGES

- 1) Living & Dining area as wide as 8.9 meter
- 2) 11.6 sqm of double height terrace attached with Living & Dining
- 3) Dedicated space of 9.32 sqm for Bar
- 4) Large balconies/ terrace areas catering to 72.77 sqm area

4 BHK TYPE B

Carpet Area: 199.38 sqm/ 2146.13 sqft
Balcony/ Terrace Area: 71.39 sqm/ 768.44 sqft
Super Area: 362.15 sqm/ 3898.20 sqft

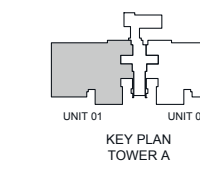
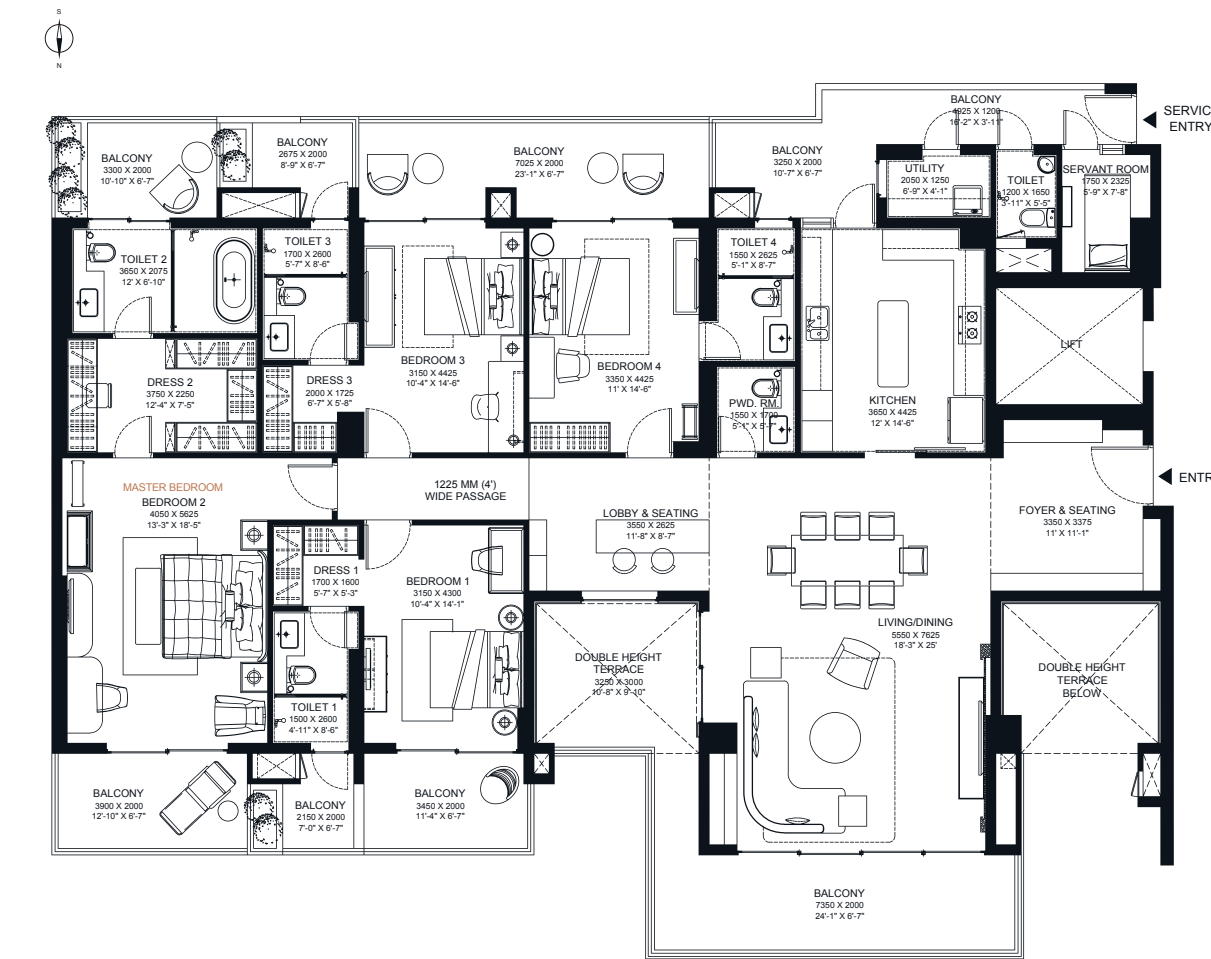


ADVANTAGES

- 1) A dedicated foyer of 11.30 sqm
- 2) 9.45 sqm sqm of terrace attached with Dining area
- 3) Unlimited green views from the 9.1 meter-wide living & dining
- 4) Enjoy 71.39 sqm of of spacious balconies/ terrace spaces

4 BHK TYPE C

Carpet Area: 199.44 sqm/ 2146.77 sqft
Balcony/ Terrace Area: 81.84 sqm/ 880.93 sqft
Super Area: 375.89 sqm/ 4046.05 sqft



ADVANTAGES

- 1) A dedicated sitting area of 11.30 sqm
- 2) Enjoy expansive views from the wrap around balcony
- 3) Create your own vertical garden in the 9.75 sqm of terrace area
- 4) Enjoy 9.32 sqm of dedicated space for bar